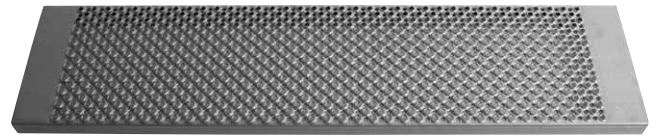


# Type O2™ Achil® Welding tread

## Stair treads

Primarily for the craftsman who welds the stair tread to the stringers. The welding stair tread has great slip resistance and drainage holes secures a dry surface. Rolled edges protects heels and achilles, as well as increases load capacity.



### Applications

Industry	Machine shops - Food industry - Chemical industry - Water treatment plant
Buildings	Residential - Office - Construction sites
Energy	Power plants - Wind turbines
Transport	Train stations - Railway - Bicycle and pedestrian walkways

### Technical data

Slip resistance	R13
Punched holes	ø9 mm
Drainage holes	ø5 mm
% of daylight	20% - 25%
EN norm requirements	15 mm - 30 mm ball proof
Standards and norms	EN 14122 - EN 1991

### Material

Steel 240 YP	Non-galvanized - Galvanized
--------------	-----------------------------

### Accessories

Other	Kick flat
-------	-----------